

Rivestimenti

AVVERTENZE GENERALI

Le immagini presenti sono indicative, si consiglia sempre di consultare la cartella rivestimenti e finiture con i campioni reali.

Lievi variazioni di colore e tonalità possono derivare dal processo produttivo del materiale.

I colori chiari non devono essere messi a contatto con tessuti e capi d'abbigliamento trattati con coloranti non fissati, o con scarse solidità di tintura, onde evitare macchie ed aloni di coloranti di cui non possiamo garantire la pulitura.

I tessuti spalmati (ecopelli) possono essere sanificati superficialmente come da decreto del Ministero della Salute con soluzioni di acqua e alcool etilico al 70% e prodotti disinfettanti commerciali pronti all'uso. Si consiglia di provare il prodotto su un angolo nascosto della superficie da pulire.

Evidenziamo speciali trattamenti, antimicrobici, antibatterici e antimicotici, che caratterizzano da sempre alcuni nostri rivestimenti, per creare un'efficace barriera difensiva contro batteri, acari e funghi, uniti ad eccezionali caratteristiche di praticità e durata nel tempo.

Planet

Cat. A Similpelle

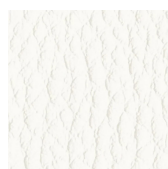
Resistenza al fuoco: UNI 9175

Classe 1IM - EN 1021 - BS 5852 - CA TB117 - M2

Composizione: 87,5% PVC - 12,5% Cotone

Peso: 640 g/mq

Resistenza all'abrasione: 100.000 cicli Martindale



A 31F



A 32F



A 29F



A 37F



A 28F



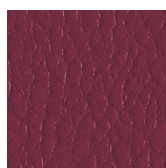
A 30F



A 35F



A 39F



A 36F



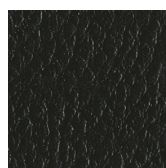
A 26F



A 34F



A 38F



A 27F

3D Fabric

Cat. A Tessuto Poliestere

Utilizzabile come rete schienale solo per il mod. Key Bold e come rivestimento su tutta la gamma

Kastel

Resistenza al fuoco: UNI 9175 Classe 1IM - BS5852

Certificati: OEKO-TEX STANDARD 100

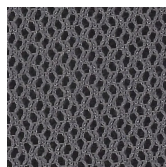
Composizione: 100% Poliestere

Peso: 360 g/mq

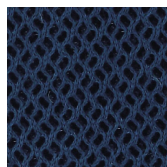
Resistenza all'abrasione: 60.000 cicli Martindale



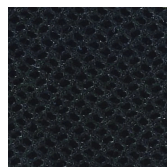
A 3BE



A 3GR



A 3BL



A 3NE

Rivestimenti

Skill/Secret

Cat. C Similpelle

Resistenza al fuoco: UNI 9175 Classe 1IM - EN 1021 - BS 5852 - CA TB117

Composizione: 76% PVC - 2% Poliuretano - 22% PES

Peso: 540 g/mq

Resistenza all'abrasione: 300.000 cicli Martindale



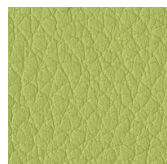
C 40F



C 41F



C 42F



C 46F



C 50F



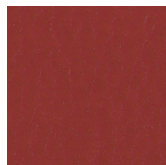
C 48F



C 47F



C 43F



C 51F



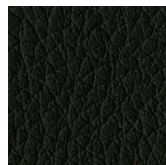
C 53F



C 45F



C 49F



C 52F

Trevi

Cat. C Tessuto

Resistenza al fuoco: Classe 1 - UNI 9175 Classe 1IM - M1 - BS 5852 - EN 1021 - CA TB117

Certificati: OEKO-TEX STANDARD 100

Composizione: 100% Poliestere Trevira CS

Peso: 450 g/mq

Resistenza all'abrasione: 70.000 cicli Martindale



C 38G



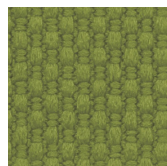
C 38T



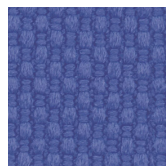
C 381



C 38M



C 385



C 383



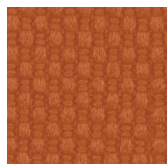
C -38



C 387



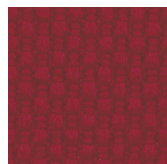
C 38L



C 380



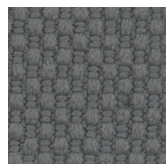
C 382



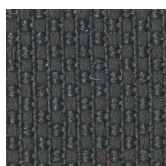
C 386



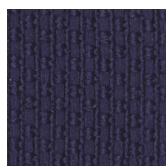
C 38P



C 384



C 38A



C 38H



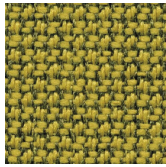
C 388

Rivestimenti

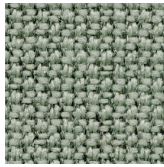
Cura

Cat. C Tessuto

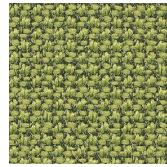
Tessuto riciclato e riciclabile
Resistenza al fuoco: BS 5852 - CA TB117 - ASTM E 84 Class 1
Certificati: OEKO-TEX STANDARD 100 - EU ECOLABEL
Composizione: 100% Poliestere riciclato
Peso: 300 g/mq
Resistenza all'abrasione: 100.000 cicli Martindale



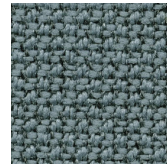
C 31C



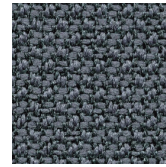
C 30C



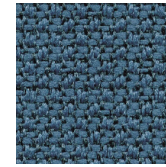
C 39C



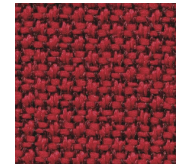
C 32C



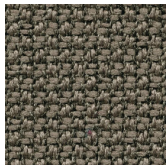
C 34C



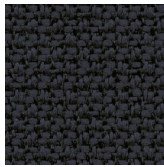
C 36C



C 37C



C 33C



C 38C

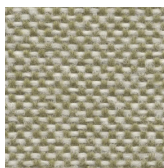
Jet

Cat. C Tessuto

Resistenza al fuoco: UNI 9175 Classe 1IM - M1 - BS 5852 - EN 1021 - CA TB117 - B1 - BS 7176
Certificati: OEKO-TEX STANDARD 100 - UE ECOLABEL
Composizione: 100% Poliestere Trevira CS
Peso: 260 g/mq
Resistenza all'abrasione: 65.000 cicli Martindale



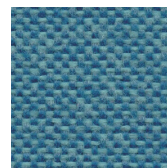
C 37J



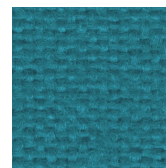
C 30J



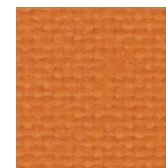
C 34J



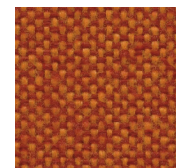
C 32J



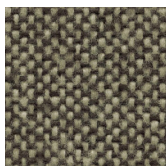
C 36J



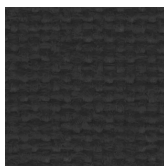
C 35J



C 31J



C 33J



C 38J

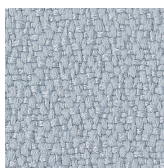
Xtreme

Cat. C Tessuto

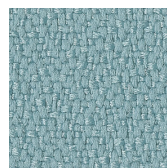
Resistenza al fuoco: UNI 9175 Classe 1IM - EN 1021 - BS 5852 - DIN 4102 B1
Certificati: OEKO-TEX STANDARD 100 - UE ECOLABEL
Composizione: 100% Poliestere riciclato
Peso: 310 g/mq
Resistenza all'abrasione: 100.000 cicli Martindale



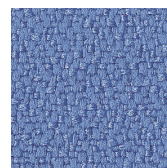
C 335



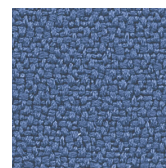
C 349



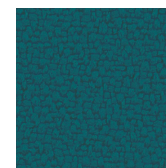
C 333



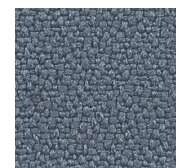
C 338



C 325



C 340



C 324

Rivestimenti

Mirage

Cat. C Tessuto

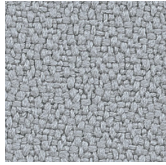
Resistenza al fuoco: UNI 9175 Classe 1IM - EN 1021 - BS 5852 - DIN 4102 B1

Certificati: OEKO-TEX STANDARD 100

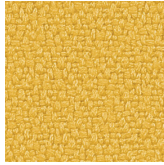
Composizione: 100% Poliestere Trevira CS

Peso: 330 g/mq

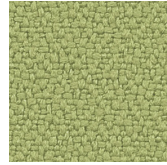
Resistenza all'abrasione: 100.000 cicli Martindale



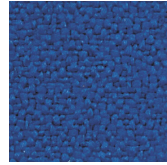
C 331



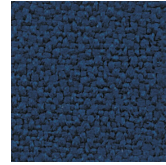
C 336



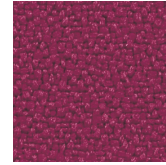
C 332



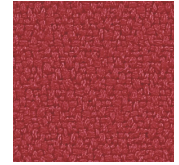
C 326



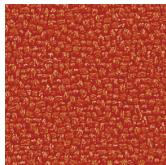
C 330



C 337



C 329



C 334



C 327



C 328

Extrema Ikon

Cat. D Similpelle

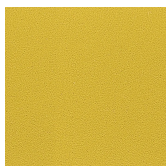
Trattamento antimicrobico, impermeabilità

Resistenza al fuoco: UNI 9175 Classe 1IM - EN 1021 - BS 5852 - CA TB117

Composizione: 63% Poliuretano - 29% Cotone - 8% PES

Peso: 480 g/mq

Resistenza all'abrasione: 150.000 cicli Martindale



D 474



D 482



D 476



D 471



D 472

Extrema AU

Cat. D Similpelle

Trattamento antimicrobico, impermeabilità

Resistenza al fuoco: UNI 9175 Classe 1IM - EN 1021 - BS 5852 - CA TB117

Composizione: 63% Poliuretano - 29% Cotone - 8% PES

Peso: 480 g/mq

Resistenza all'abrasione: 150.000 cicli Martindale



D 420



D 425



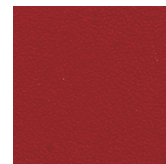
D 426



D 430



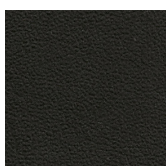
D 429



D 422



D 423



D 424

Rivestimenti

Poseidon

Cat. D Tessuto

Tessuto riciclato e riciclabile
Resistenza al fuoco: UNI 9175 Classe 1M - EN 1021 - BS 5852 - CA TB117
Certificati: OEKO-TEX STANDARD 100 - Seaqual
Composizione: 100% Poliestere riciclato Seaqual
Peso: 500 g/mq
Resistenza all'abrasione: 100.000 cicli Martindale



D 40P



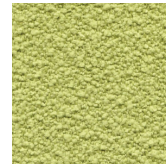
D 49P



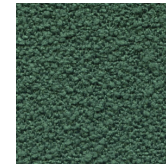
D 45P



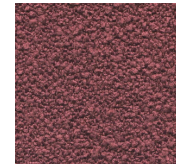
D 46P



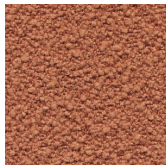
D 43P



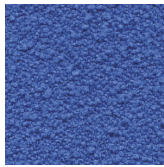
D 44P



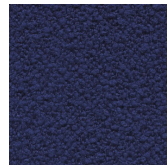
D 42P



D 41P



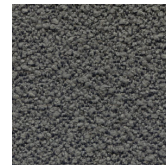
D 47P



D 48P



D 51P



D 50P



D 52P

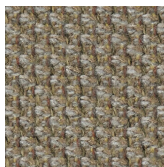
Cyber

Cat. D Tessuto

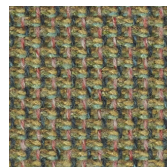
Tessuto riciclato e riciclabile
Resistenza al fuoco: BS EN 1021 - CA TB117
Certificati: OEKO-TEX STANDARD 100 - UE ECOLABEL
Composizione: 100% Poliestere riciclato
Peso: 407 g/mq
Resistenza all'abrasione: 120.000 cicli Martindale



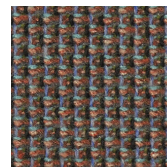
D 41Y



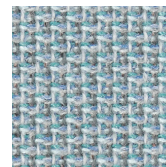
D 42Y



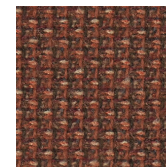
D 40Y



D 43Y



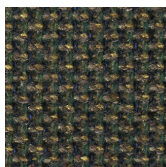
D 44Y



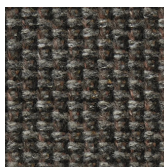
D 45Y



D 46Y



D 47Y



D 48Y

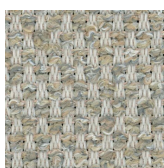
Tweed Coco

Cat. D Tessuto

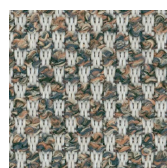
Resistenza al fuoco: UNI 9175 Classe 1M - EN 1021 - BS 5852 - CA TB117
Certificati: OEKO-TEX STANDARD 100
Composizione: 52% PES FR, 48% PET FR
Peso: 467 g/mq
Resistenza all'abrasione: 50.000 cicli Martindale



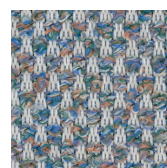
D 40W



D 41W



D 42W



D 43W



D 44W

Rivestimenti

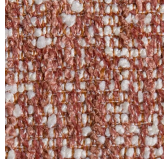
Honey

Cat. D Tessuto

Ignifugo solo a richiesta
Certificati: OEKO-TEX STANDARD 100
Composizione: 100% PES
Peso: 550 g/mq
Resistenza all'abrasione: 70.000 cicli Martindale



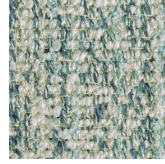
D 40H



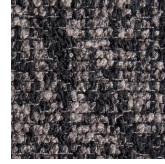
D 41H



D 42H



D 43H



D 44H

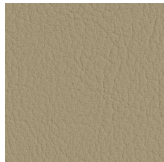
Valencia

Cat. D Similpelle

Protezione antibatterica, Permablok3, resistenza UV, finitura antimacchia, protezione antibatterica, antimicotica e antifunginea
Resistenza al fuoco: UNI 9175 Classe 1IM - EN 1021 - DIN 4102 - NFPA 260 - CA TB117
Composizione: 100% Vinile
Certificati: Greenguard Gold - Carbon Neutral
Peso: 650 g/mq
Resistenza all'abrasione: 300.000 cicli Martindale



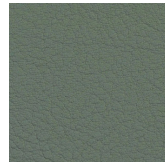
D 54V



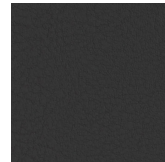
D 50V



D 51V



D 52V



D 53V

Fenice

Cat. D Tessuto

Resistenza al fuoco: UNI 9175 Classe 1IM - EN 1021 - BS 5852 - CA TB117
Certificati: OEKO-TEX STANDARD 100
Composizione: 75% Lana - 25% Poliammide
Peso: 335 g/mq
Resistenza all'abrasione: 100.000 cicli Martindale



D 503



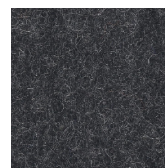
D 505



D 504



D 508



D 509

Jungla

Cat. D Tessuto

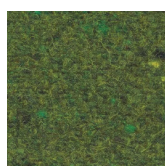
Tessuto riciclato e riciclabile
Resistenza al fuoco: UNI 9175 Classe 1IM - EN 1021 - BS 5852 - CA TB117
Certificati: OEKO-TEX STANDARD 100
Composizione: 75% Lana - 20% Poliammide - 5% AF
Peso: 395 g/mq
Resistenza all'abrasione: 100.000 cicli Martindale



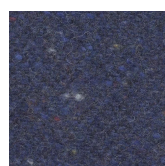
D 510



D 511



D 512



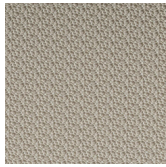
D 513

Rivestimenti

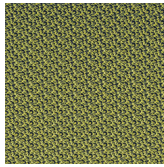
Hitch

Cat. D Tessuto tecnico

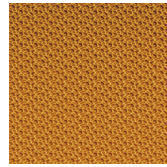
Protezione antibatterica, Permablok3, resistenza UV, finitura antimacchia, impermeabilità
Resistenza al fuoco: UNI 9175 Classe 1IM - EN 1021 - DIN 4102 - NFPA 260 - CA TB117
Certificati: Greenguard Gold - Carbon Neutral
Composizione: 100% Vinile
Peso: 680 g/mq
Resistenza all'abrasione: 100.000 cicli Martindale



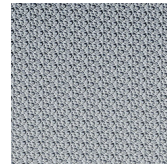
D 802



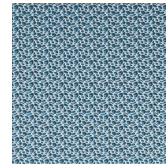
D 804



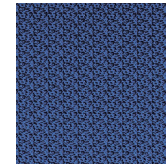
D 803



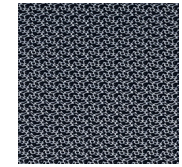
D 805



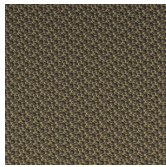
D 806



D 808



D 807



D 810

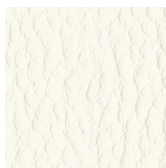


D 809

Pelle

Cat. P Vera pelle

Resistenza al fuoco: CA TB117 - BS 5852 - BS EN 1021
Composizione: Pelle bovina origine europea
Certificati: Biobased product - Carbon Neutral - Blu Angel
Spessore: 0,8 - 1,0 mm



P 901



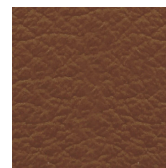
P 915



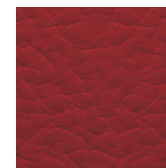
P 917



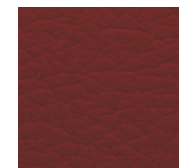
P 905



P 908



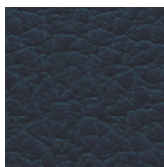
P 909



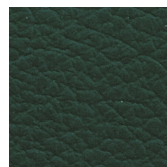
P 914



P 920



P 912



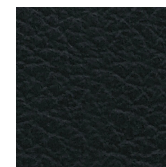
P 910



P 911



P 902

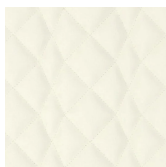


P 903

Skill Diamond

Similpelle

Solo per schienale trapuntato mod. Klint
Resistenza al fuoco: UNI 9175 Classe 1IM - EN 1021
Composizione: 69% P.V.C. plastificato - 30% Cotone - 1% Poliuretano
Resistenza all'abrasione: 50.000 cicli Martindale



C 40T



C 41T



C 49T



C 52T

Rivestimenti

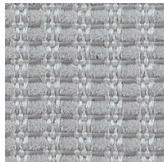
Mesh

Rete

Solo per mod. Kuper, Karma, Korium, Kosmo, Kelly
Certificati: OEKO-TEX STANDARD 100
Composizione: 55% Poliestere - 45% Poliammide
Peso: 280 g/mq
Resistenza all'abrasione: 100.000 cicli Martindale



218



221

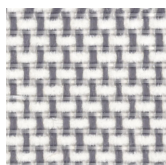


222

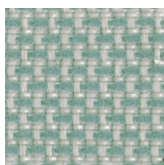
Shrinx 4902

Rete

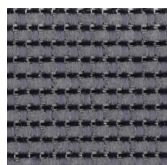
Solo per mod. Key Line
Resistenza al fuoco: EN 1021
Composizione: 70% Poliestere - 30% Poliammide
Peso: 375 g/mq
Resistenza all'abrasione: 170.000 cicli Martindale



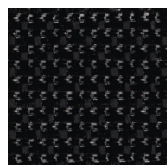
Beige



Verde



Grigio



Nero

Finiture

AVVERTENZE GENERALI

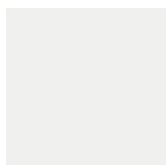
Le immagini e i riferimenti dei codice colori sono indicativi, si consiglia sempre di consultare la cartella rivestimenti e finiture con i campioni reali.

I prodotti con materiale riciclato (PSV plastica seconda vita) possono presentare piccole variazioni di colore o lievi imperfezioni superficiali da considerarsi caratteristiche intrinseche del processo e garanzia dell'effettivo impiego di materiale riciclato.

Kicca

Polipropilene

Colori scocca



Bianco
RAL 9003



Tortora
RAL 1019



Arancio
RAL 2008



Rosso
RAL 3020



Rosso mattone
NCS 3560-Y70R



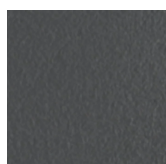
Verde oliva
PANTONE 18-0527
TCX



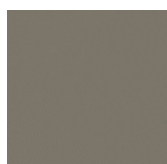
Turchese
NCS S 4010-B50G



Blu oceano
NCS S 7010-B10G



Grigio
RAL 7043



Lava
PANTONE 405 C

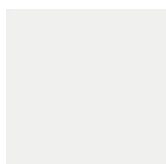


Nero

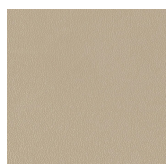
Kalea

Polipropilene

Colori scocca monocolore



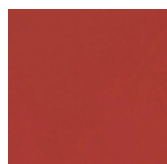
Bianco
RAL 9003



Tortora
RAL 1019



Arancio
RAL 2008



Rosso
RAL 3020



Rosso mattone
NCS 3560-Y70R



Verde
RAL 6039



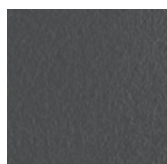
Verde oliva
PANTONE 18-0527
TCX



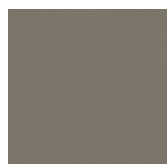
Turchese
NCS S 4010-B50G



Blu oceano
NCS S 7010-B10G



Grigio
RAL 7043



Lava
PANTONE 405 C



Nero

Finiture

Kalea

Polipropilene

Colori retroscocca bicolore (interno bianco)



Tortora
RAL 1019



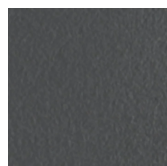
Arancio
RAL 2008



Turchese
NCS S 4010-B50G



Blu
RAL 5022



Grigio
RAL 7043

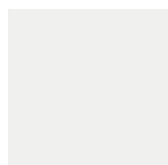


Nero

Kross

Polipropilene

Colori scocca



Bianco
RAL 9003



Tortora
RAL 7032



Rosso
RAL 3009



Verde
RAL 6013



Ottanio
RAL 5021

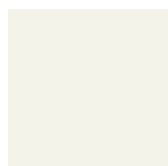


Nero

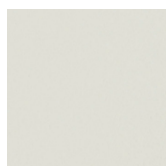
Kicca One

Polipropilene rinforzato fibra vetro

Colori sedia



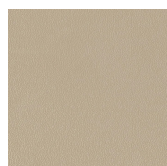
Bianco
RAL 9010



Grigio chiaro
RAL 9018



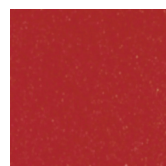
Beige
RAL 7032



Tortora
RAL 1019



Caramello
RAL 050 50 30



Rosso
RAL 3013



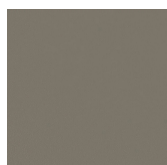
Verde
RAL 1027



Salvia
RAL 7003



Turchese
NCS S 4010-B50G



Lava
PANTONE 405 C

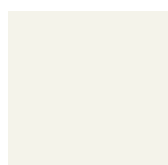


Grigio Ardesia
RAL 7022

Klia

Polipropilene rinforzato fibra vetro

Colori sedia



Bianco
RAL 9010



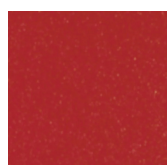
Tortora
RAL 1019



Giallo
RAL 1004



Rosa Antico



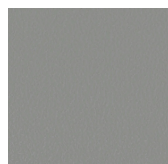
Rosso
RAL 3013



Verde
RAL 6011



Turchese
NCS S 4010-B50G



Grigio
RAL 7037



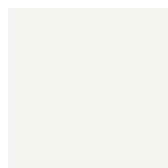
Grigio Ardesia
RAL 7022

Finiture

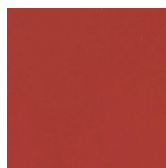
Krizia

Polycarbonato

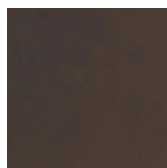
Colori scocca



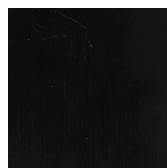
Bianco



Rosso
RAL 3001



Moka
RAL 8010



Nero
RAL 9017



Trasparente

Koki

Acciaio verniciato

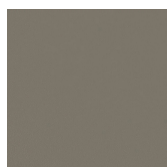
Sedile e struttura



Rosso mattone
NCS 3560-Y70R



Verde oliva
PANTONE 18-0527
TCX



Lava
PANTONE 405 C

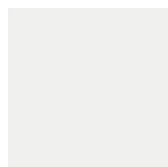


Nero
RAL 9005

Klan

Polipropilene rinforzato fibra vetro

Colori sgabello



Bianco
RAL 9003



Terracotta



Creta

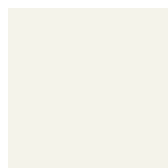


Nero

Kuark

Polietilene

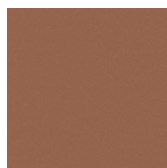
Colori poltrona



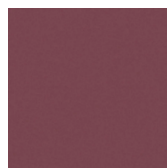
Bianco
RAL 9010



Senape



Terracotta



Bordeaux



Azzurro

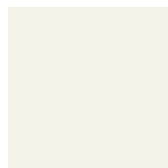


Lava
PANTONE 405 C

Kensho

Acciaio verniciato

Colori piano e base



Bianco
RAL 9010



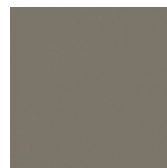
Tortora
RAL 1019



Giallo
RAL 1004



Arancio
RAL 2010



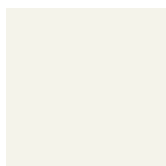
Lava
PANTONE 405 C

Finiture

Kapio

Acciaio verniciato

Colori piano e base



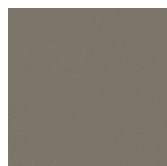
Bianco
RAL 9010



Tortora
RAL 1019



Giallo
RAL 1004

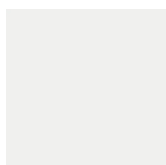


Lava
PANTONE 405 C

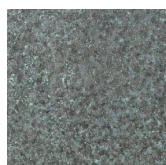
Kyu

HPL

Colori piano



Bianco
RAL 9003



Verde rame

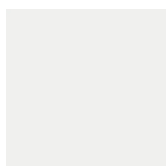


Nero
RAL 9005

Kyu

Acciaio verniciato

Colori base in tondino



Bianco
RAL 9003



Verde
PANTONE 447 U

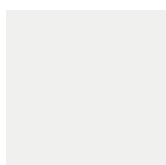


Nero
RAL 9005

Kairos

Laminato

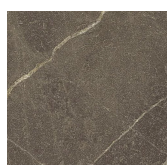
Piano tavolo



Bianco
RAL 9003



Rosso mattone
NCS 3560-Y70R

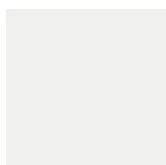


Patagonia
Solo per piano
120x120

Kairos

Acciaio verniciato

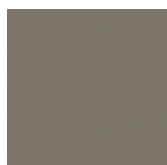
Base 4 gambe



Bianco
RAL 9003



Rosso mattone
NCS 3560-Y70R



Lava
PANTONE 405 C

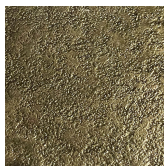
Finiture

Kobi

Piano tavolo



Verde



Lava



Rovere chiaro

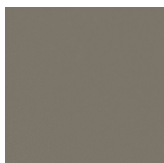
Kobi

Acciaio verniciato

Colori struttura



Verde
PANTONE 447 U

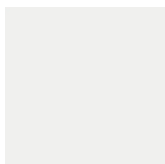


Lava
PANTONE 405 C

Key Move

Acciaio verniciato

Colori tavolino



Bianco
RAL 9003



Tortora
RAL 1019



Nero
RAL 9005