

Rivestimenti e finiture

Upholsteries and finishes

AVVERTENZE GENERALI

I colori chiari, non devono essere messi a contatto con tessuti e capi d'abbigliamento trattati con coloranti non fissati, o con scarse solidità di tintura, onde evitare macchie ed aloni di coloranti di cui non possiamo garantire la pulitura.

I tessuti spalmati (ecopelli) possono essere sanificati superficialmente come da decreto del Ministero della Salute con soluzioni di acqua e alcool etilico al 70% e prodotti disinfettanti commerciali pronti all'uso. Si consiglia di provare il prodotto su un angolo nascosto della superficie da pulire.

Evidenziamo speciali trattamenti, antimicrobici, antibatterici e antimicotici, che caratterizzano da sempre alcuni nostri rivestimenti, per creare un'efficace barriera difensiva contro batteri, acari e funghi, uniti ad eccezionali caratteristiche di praticità e durata nel tempo.

GENERAL WARNINGS

To avoid permanent stains, the lighter colours of the article should not be brought into contact with textiles and clothing unfixed dyes. We cannot guarantee the ability to remove unknown dyes from light coloured product.

The coated fabrics (eco-leathers) can be superficially sanitized as per the Decree of the Italian Ministry of Health with solutions of water and 70% ethyl alcohol and commercial disinfectant products ready for use. We suggest to test the product on a small hidden corner of the surface you need to clean.

We focus your attention on special antimicrobial, antibacterial and antifungal treatments, which have always distinguished some of our coatings to create a valid defensive barrier against bacteria, mites and fungi, combined with exceptional features of practicality and durability.

Cat. A
 ECOPELLE
 ECOLEATHER

Resistenza alla fiamma - Fire resistance
 Certificato Classe 1 UNI 9175 CL. 1 IM
 87,5% P.V.C. plastificato - 12,5% cotone
 (Martindale 100.000)



A 31 F



A 32 F



A 29 F



A 37 F



A 28 F



A 30 F



A 35 F



A 26 F



A 34 F



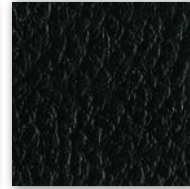
A 38 F



A 39 F



A 36 F

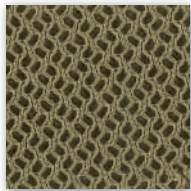


A 27 F

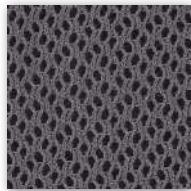
Cat. A
 TESSUTO POLIESTERE
 POLYESTER FABRIC

Material: 100% Polyester
 Certifications: Classe 1 IM - BS 5852:2006 Pass Clause 11, NI/5
 Abrasion resistance: UNI EN ISO 12947 (Martindale 60.000)

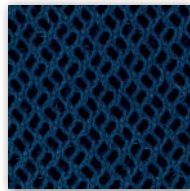
Utilizzabile come rivestimento su tutta la gamma Kastel e come rete schienale solo per il modello KEY BOLD
It can be used on the entire Kastel range and as backrest mesh on the KEY BOLD model only



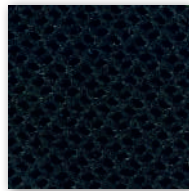
A 3BE



A 3GR



A 3BL



A 3NE

Cat. C
 ECOPELLE
 ECOLEATHER

SKILL/SECRET
 Resistenza alla fiamma - Fire resistance
 Certificato Classe 1 UNI 9175 CL. 1IM - EN 1021 - BS 5852
 69% P.V.C. plastificato - 30% cotone - 1% poliuretano
 (Martindale 50.000)



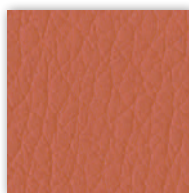
C 40 F



C 41 F



C 42 F



C 43 F



C 44 F



C 45 F



C 46 F



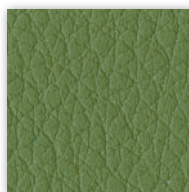
C 47 F



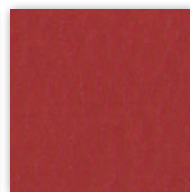
C 48 F



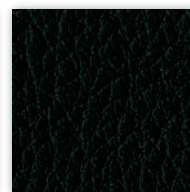
C 49 F



C 50 F



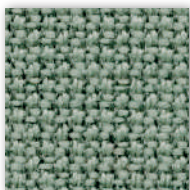
C 51 F



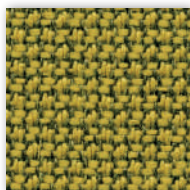
C 52 F

Cat. C
TESSUTO
FABRIC

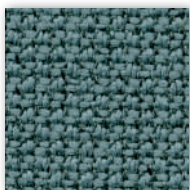
Material: 98% post consumer recycled polyester - 2% polyester
 Flammability: EN 1021 1&2 · BS 5852 0&1 CA · TB 117-2013.
 Will also pass other flammability standards.
 Flame retardant performance is dependent upon the foam used.
 Contain no Flame Retardant chemical.
 Abrasion resistance: rubs · BS EN 14465 · BS EN ISO 12947-2 (Martindale 100.000)



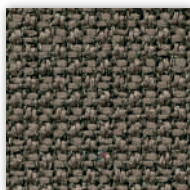
C 30 C



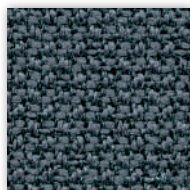
C 31 C



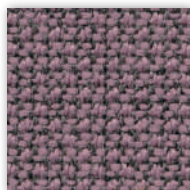
C 32 C



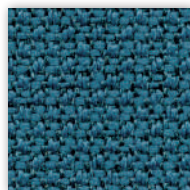
C 33 C



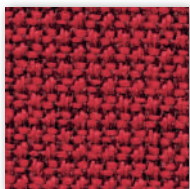
C 34 C



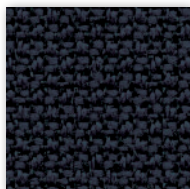
C 35 C



C 36 C



C 37 C



C 38 C

Cat. C
TESSUTO
FABRIC

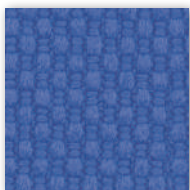
Tessuto altamente ignifugo
 Certificato Classe 1 Ministero dell'Interno
 Fireproof fabric - Tissu non feu
 Brandfester Bezug - Tela ignifuga
 100% Poliestere Trevira CS
 (Martindale 70.000)



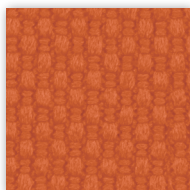
C 381



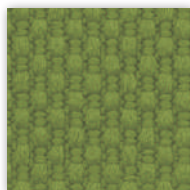
C 38 T



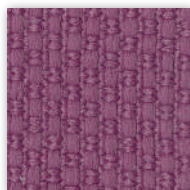
C 383



C 380



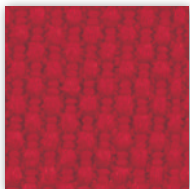
C 385



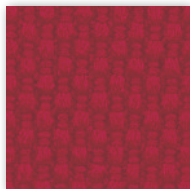
C 38 L



C 38 H



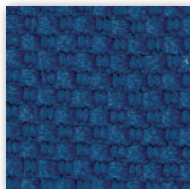
C 382



C 386



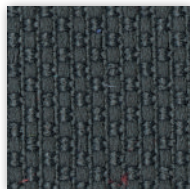
C 387



C-38



C 384



C 38 A



C 388



C 38 G



C 38 M



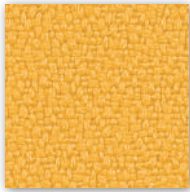
C 38 P

Cat. C
TESSUTO
FABRIC

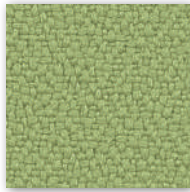
Tessuto altamente ignifugo
Certificato Classe 1 Ministero dell'Interno
Fireproof fabric - Tissu non feu
Brandfester Bezug - Tela ignifuga
100% Xtreme FR®
(Martindale 100.000)



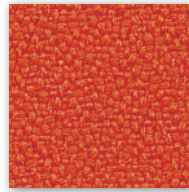
C 335



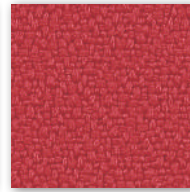
C 336



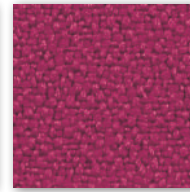
C 332



C 334



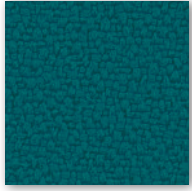
C 329



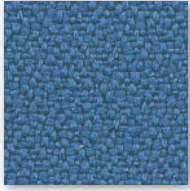
C 337



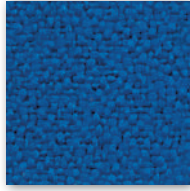
C 327 (Dark brown)



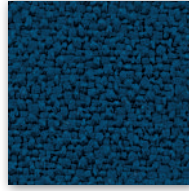
C 340



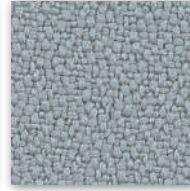
C 325



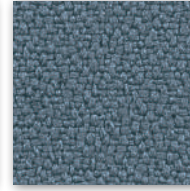
C 326



C 330



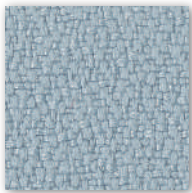
C 331



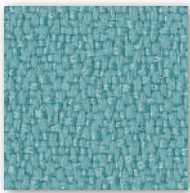
C 324



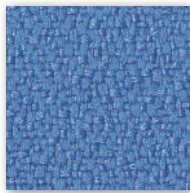
C 328



C 349



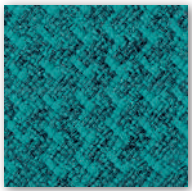
C 333



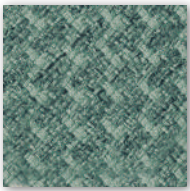
C 338

Cat. D
TESSUTO
FABRIC

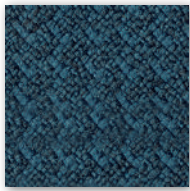
Post consumer recycled polyester
98% Polyester 2%
Flammability EN 1021 1&2
BS 5852 O&1 - CA TB 117-2013
(Martindale 100.000)



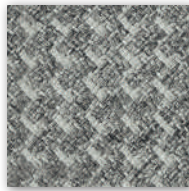
D 51B



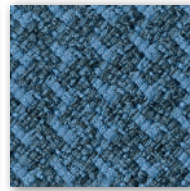
D 52B



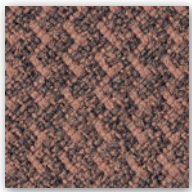
D 53B



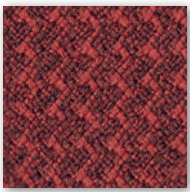
D 54B



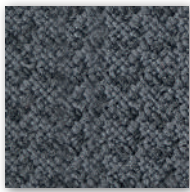
D 55B



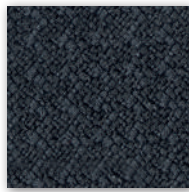
D 56B



D 57B



D 58B

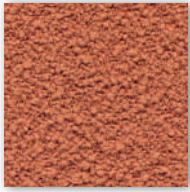


D 59B

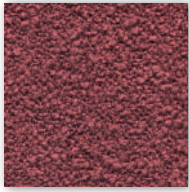
Cat. D

TESSUTO RICICLATO E RICICLABILE
RECYCLED AND RECYCLABLE FABRIC

Material: 100% PL RECYCLED SEAQUAL
Certifications: Classe 1 IM - BS 5852 Crib N°5 - EN 1021 Part 1-2 - Calif. Bull.117 June 2013
Environment: STANDARD 100 by OEKO-TEX® EU Ecolabel
Abrasion resistance: UNI EN ISO 12947 (Martindale 100.000)



D 41P



D 42P



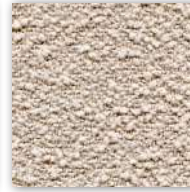
D 40P



D 43P



D 44P



D 45P



D 46P



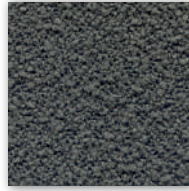
D 47P



D 48P



D 49P



D 50P



D 51P

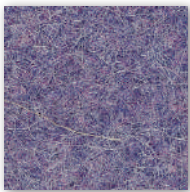


D 52P

Cat. D

TESSUTO
FABRIC

Resistenza alla fiamma - Fire resistance
Certificato Classe 1 IM EN 1021 Part. 1-2
75% Lana - 25% Poliammide / 75% Wool - 25% Polyamide
(Martindale 100.000)



D 501



D 502



D 503



D 504



D 505



D 506



D 507



D 508



D 509

Cat. D

TESSUTO
FABRIC

100% post-consumer recycled polyester
Abrasion: rubs (EN ISO 12947-2) Martindale 120.000
Flammability: BS EN 10211&2 Cigarette and Match
CA TB 117-2013



OEKO-TEX®
CONFIDENCE IN TEXTILES
STANDARD 100



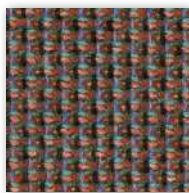
D 40Y



D 41Y



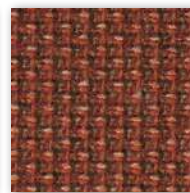
D 42Y



D 43Y



D 44Y



D 45Y



D 46Y



D 47Y



D 48Y

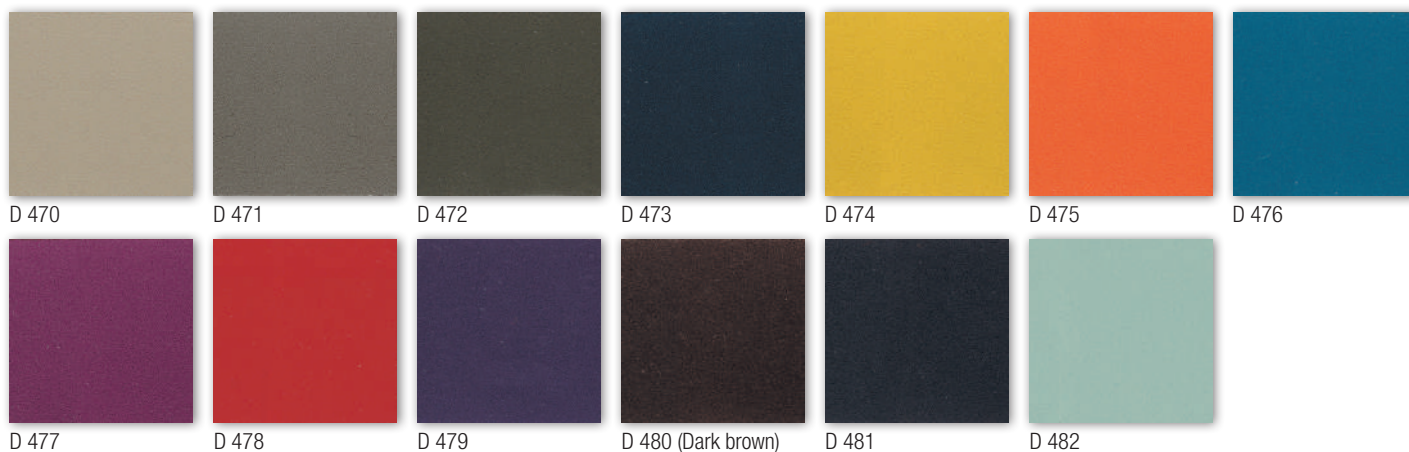
Cat. D
ECOPELLE
ECOLEATHER

Trattamento antimicrobico - Antimicrobial treatment
 Impermeabilità-Waterproof
 Resistenza fiamma-Fire resistance
 UNI 9175/87 CL.1IM - EN 1021 BS 5852
 63% Poliuretano / Polyurethane - 29% Cotone - Cotton 8% PES
 IMO A. 652
 (Martindale 150.000)



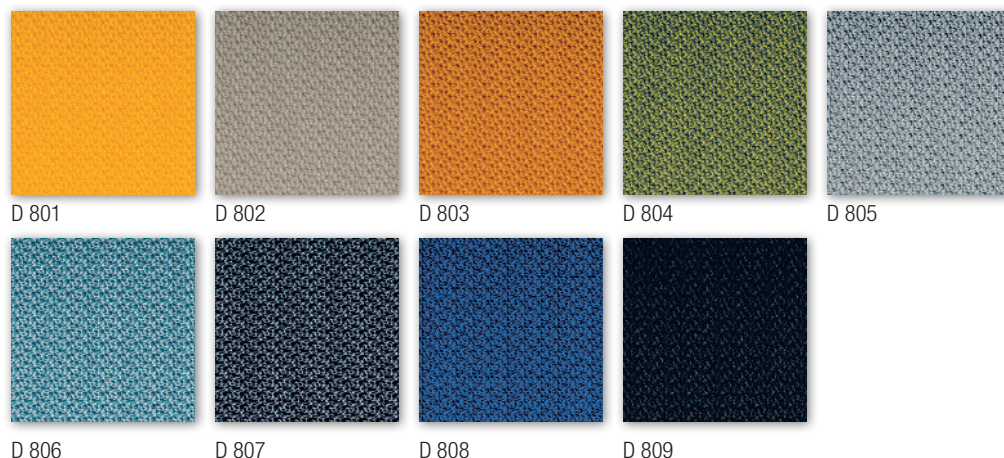
Cat. D
ECOPELLE
ECOLEATHER

Trattamento antimicrobico - Antimicrobial treatment
 Impermeabilità-Waterproof
 Resistenza fiamma-Fire resistance
 UNI 9175/87 CL.1IM - EN 1021 BS 5852
 63% Poliuretano / Polyurethane - 29% Cotone - Cotton 8% PES
 IMO A. 652
 (Martindale 150.000)



Cat. D
TESS. TECNICO
TECHNICAL FABRIC

Tessuto ignifugo - Fireproof fabric - Tissu non feu - Brandfester Bezug - Tela ignifuga
 Classe 1IM - DIN 4102 B2 - NF P 92-503/M2
 100% Vinyl-compound - 100% Polyester Ultra Hi-Loft^{2TM} Backing
 PERMABLOK^{3®} - Waterproof
 (Martindale > 100.000)



Cat. P
 VERA PELLE
 GENUINE LEATHER

Vera pelle - Genuine leather
 Cuir - Leder - Piel auténtica
A richiesta disponibili altri colori.
By request any other colours available.



P 901



P 915



P 920



P 917



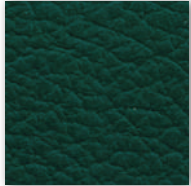
P 909



P 905



P 911



P 910



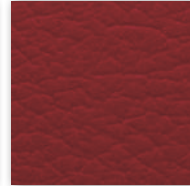
P 912



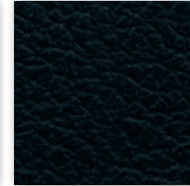
P 908



P 902 (Dark brown)



P 914

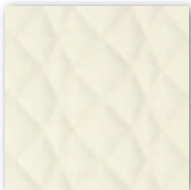


P 903

ECOPELLE
 ECOLEATHER

Solo per schienale trapuntato modello
 Only for quilted back model
KLINT

SKILL/SECRET
 Resistenza alla fiamma - Fire resistance
 Certificato Classe 1 UNI 9175 CL. 1IM - EN 1021 - BS 5852
 69% P.V.C. plastificato - 30% cotone - 1% poliuretano
 (Martindale 50.000)



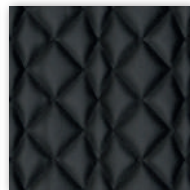
40T



41T



49T



52T

Solo per modello
 Only for model
KEY LINE

Rete-Mesh-Resille-Membran-Red
 70% Polyester - 30% Polyamid
 Flammability: EN 1021:2014 part 1
 (cigarette test)
 (Martindale 170.000)

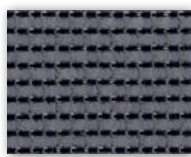
4902
SHRINX

Solo per modello
 Only for model
**KUPER, KARMA,
 KORIAM, KOSMO**

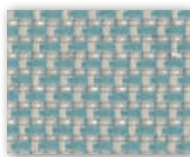
Rete - Mesh - Resille
 Membran - Red
 64% PL - 36% PA
 Martindale 100,000



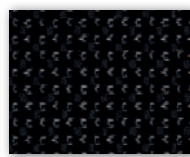
B BEIGE



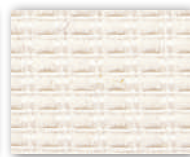
G GRIGIO/GREY



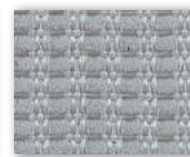
V VERDE/GREEN



N NERO/BLACK



D 218



D 221



D 222

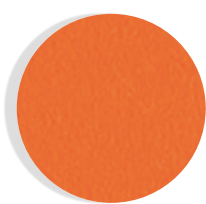
KICCA KALEA

COLORI POLIPROPILENE
POLYPROPYLENE COLOURS



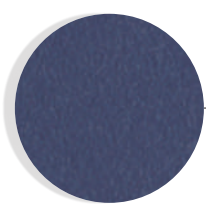
C

Crema
Cream
Crème
Crema
Crema



A

Arancio
Orange
Orange
Orange
Naranja



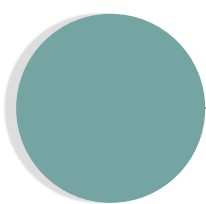
B

Blu
Blue
Bleu
Blau
Azul



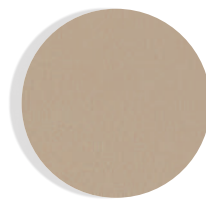
G

Grigio
Grey
Gris
Grau
Gris



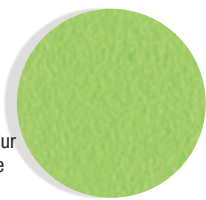
P

Turchese
Turquoise
Turquoise
Türkis
Turquesa



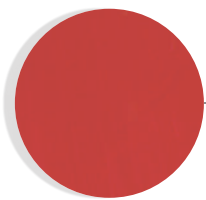
T

Tortora
Dove-colour
Tourterelle
Taube
Arena



V

Verde
Green
Vert
Grün
Verde



R

Rosso
Red
Rouge
Rot
Rojo



N

Nero
Black
Noir
Schwarz
Negro

KROSS

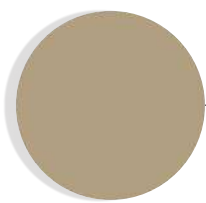
COLORI POLIPROPILENE PER SCOCCA E TELAIO 4-GAMBE
POLYPROPYLENE COLOURS FOR SHELL AND 4-LEG FRAME

SCOCCA / SHELL / COQUE / SCHALE / CARCASA



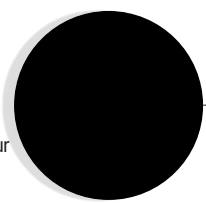
B

Bianco
White
Blanc
Weiss
Blanco



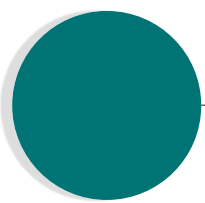
T

Tortora
Dove-colour
Tourterelle
Taube
Arena



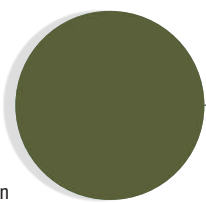
N

Nero
Black
Noir
Schwarz
Negro



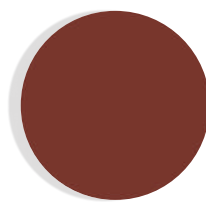
A

Ottanio
Teal
Octane
Oktan-grün
Octanio



V

Verde
Green
Vert
Grün
Verde



R

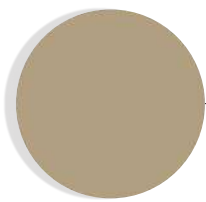
Rosso
Red
Rouge
Rot
Rojo

TELAIO / FRAME / PIETEMENT / GESTELL / ESTRUCTURA



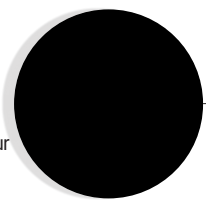
AB

Bianco
White
Blanc
Weiss
Blanco



AT

Tortora
Dove-colour
Tourterelle
Taube
Arena



AN

Nero
Black
Noir
Schwarz
Negro



FL

Fibra legno
Wood fiber
Fibre de bois
Holzfaser
Fibra de madera

KICCA ONE

COLORI POLIPROPILENE RINFORZATO FIBRA VETRO
FIBERGLASS-REINFORCED POLYPROPYLENE COLORS



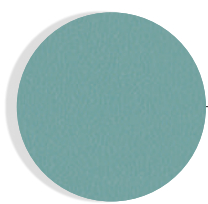
C

Crema
Cream
Crème
Creme
Crema



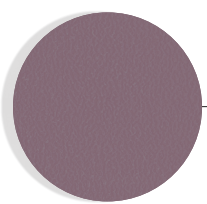
G

Grigio
Grey
Gris
Grau
Gris



P

Turchese
Turquoise
Turquoise
Türkis
Turquesa



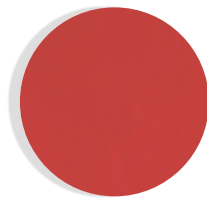
F

Lilla
Lilac
Lila
Lila
Lila



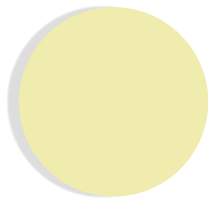
V

Verde
Green
Vert
Grün
Verde



R

Rosso
Red
Rouge
Rot
Rojo



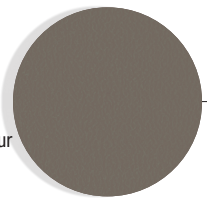
Y

Giallo
Yellow
Jaune
Gelb
Amarillo



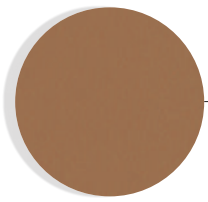
T

Tortora
Dove-colour
Tourterelle
Taube
Arena



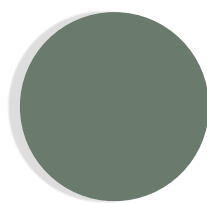
L

Lava



K

Caramello
Caramel
Karamell
Caramelo



E

Salvia
Desert sage
Vert sage
Graugrün
Salvia

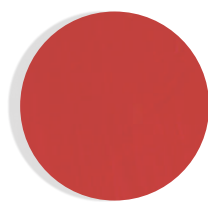
KRIZIA

COLORI POLICARBONATO
POLYCARBONATE COLOURS



B

Bianco
White



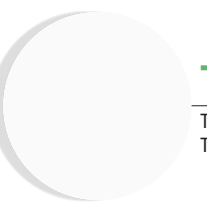
R

Rosso
Red
Rouge
Rot
Rojo



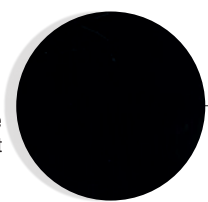
M

Moka



T

Trasparente
Transparent



N

Nero
Black
Noir
Schwarz
Negro

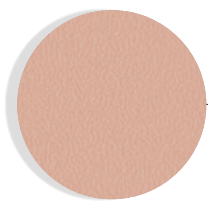
KLIA

COLORI POLIPROPILENE RINFORZATO FIBRA VETRO
FIBERGLASS-REINFORCED POLYPROPYLENE COLORS



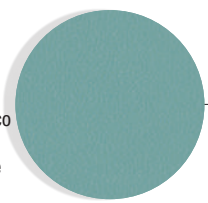
C

Crema
Cream
Crème
Creme
Crema



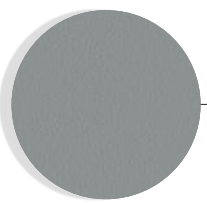
A

Rosa antico
Old rose
Vieux rose
Altrosa
Rosa antiguo



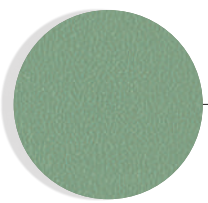
P

Turchese
Turquoise
Turquoise
Türkis
Turquesa



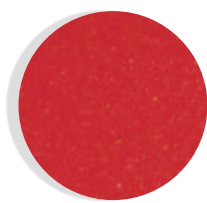
G

Grigio
Grey
Gris
Grau
Gris



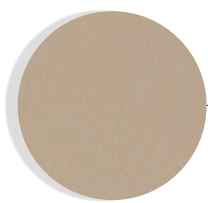
V

Verde
Green
Vert
Grün
Verde



R

Rosso
Red
Rouge
Rot
Rojo



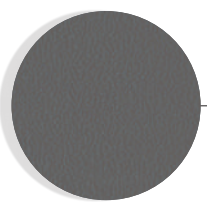
T

Tortora
Dove-colour
Tourterelle
Taube
Arena



Y

Giallo
Yellow
Jaune
Gelb
Amarillo



S

Grigio ardesia
Slate grey
Gris ardoise
Schiefergrau
Gris pizarra

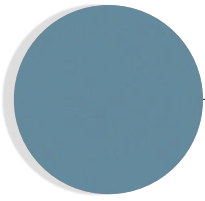
KUARK

COLORI POLIETILENE
POLYETHYLENE COLOURS



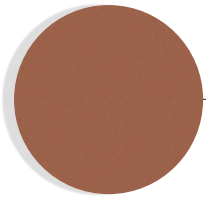
BC

Bianco
White
Blanc
Weiss
Bianco



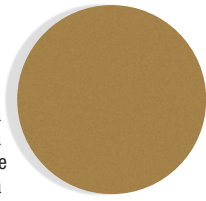
AZ

Azzurro
Light Blue
Bleu clair
Hellblau
Azul Claro



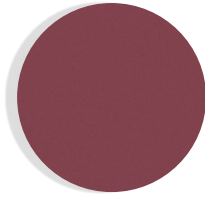
TR

Terracotta
Terracotta
Terre Cuite
Terrakotta
Terracotta



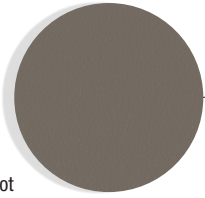
SE

Senape
Mustard
Moutarde
Senf
Mostaza



BD

Bordeaux
Burgundy
Bordeaux
Bordeauxrot
Budeo

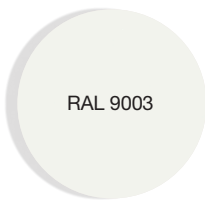


LA

Lava

KENSHO

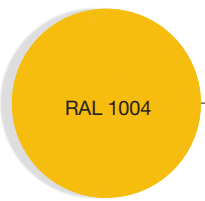
COLORI PIANI-BASI
TOPS-BASES COLOURS



RAL 9003

B

Bianco
White
Blanc
Weiss
Blanco



RAL 1004

G

Giallo
Yellow
Jaune
Gelb
Amarillo



RAL 2010

A

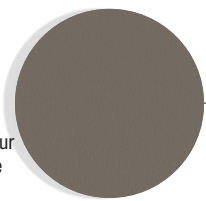
Arancio
Orange
Orange
Orange
Naranja



RAL 1019

T

Tortora
Dove-colour
Tourterelle
Taube
Arena

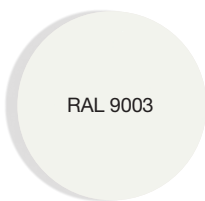


L

Lava

KAPìO

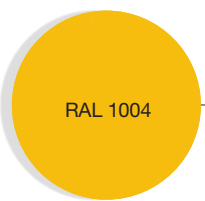
COLORI PIANI-BASI
TOPS-BASES COLOURS



RAL 9003

B

Bianco
White
Blanc
Weiss
Blanco



RAL 1004

G

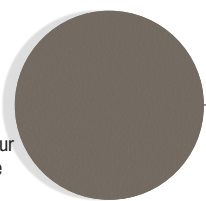
Giallo
Yellow
Jaune
Gelb
Amarillo



RAL 1019

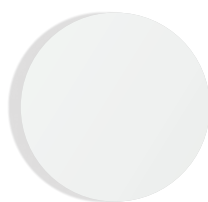
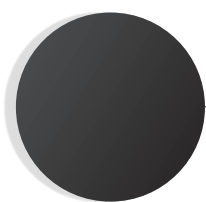
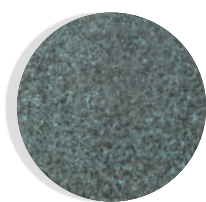
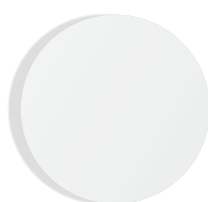
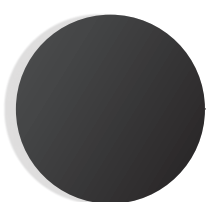
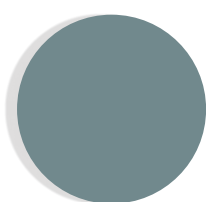
T

Tortora
Dove-colour
Tourterelle
Taube
Arena



L

Lava

PIANO IN HPL / HPL TABLE TOP / PLATEAU EN HPL / TISCHPLATTE / ENCIMERA EN HPL**B**Bianco
White
Blanc
Weiss
Blanco**N**Nero
Black
Noir
Schwarz
Negro**V**Verde rame
Copper green
Vert-de-gris
Kupfergrün
Verde cobre**BASE IN TONDINO / ROD FRAME / PIÈTEMENT EN TORON / RUNDROHRGESTELL / BASE EN RODILLA****B**Bianco
White
Blanc
Weiss
Blanco**N**Nero
Black
Noir
Schwarz
Negro**V**Verde
Green
Vert
Grün
Verde