

Finiture | Finishes

MEL

MELAMINICO | MELAMINE



038 Bianco



068 Grigio Nuvola



030 Olmo



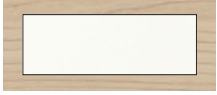
034 Rovere Naturale



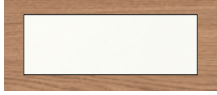
041 Titanio

MEL BC *

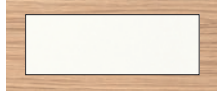
MELAMINICO BICOLOR | BICOLOR MELAMINE



037 Bianco + Olmo



036 Bianco + Rovere Naturale



043 Bianco + Legno Nucleo



044 Titanio + Olmo



045 Titanio + Rovere Naturale



049 Titanio + Legno Nucleo

* SOLO PER PIANI SP. 30 MM | ONLY FOR TH. 30 MM TOPS

MEL WR

MELAMINICO SCRIVIBILE | WRITABLE MELAMINE



077 Bianco

SUPER MATT

SUPER MATT | SUPER MATT



050 Black

LEGNO | WOOD VENEER



ROV 003
003 Rovere Massello



RCL 004
004 Rovere Classico



WAL 002
002 Noce



RTA 005
005 Rovere Tabacco

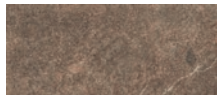
GRES | GRES



GRES 491
491 Loft Beige



GRES 492
492 Pietra Piasentina

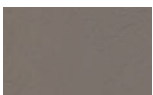


GRES 493
493 Porfido

MATERIALI COMPOSITI | COMPOSITE MATERIALS

CEM

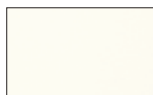
CEMENTO | CEMENT



350 Cemento

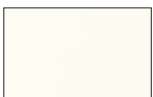
CRI

CRISTALPLANT®



541 Bianco

METALLO | METAL



053 BIANCO
053 Bianco



069 TITANIO
069 Titanio



047 ALU
Alluminio
Aluminium



052 BRILL
052 Brill



051 NERO
051 Nero



060 CROMO
Cromato
Chrome

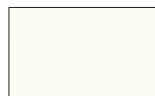


INOX
Acciaio inox
Stainless steel

Campioni colore indicativi, possono differire dall'originale
Colours for reference only and may vary from originals

LAC

LACCATO OPACO | MATT LACQUERED



401 Bianco



430 Pioggia



427 Corda



403 Crema



431 Roccia



428 Cappuccino



406 Tortora



408 Verde Oliva



433 Verde Muschio



432 Avio



421 Ocre



413 Amarena



417 Titanio



418 Fondente



429 Ombra



419 Grigio Carbone

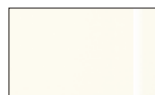


420 Nero

* NON DISPONIBILE PER PIANI | NOT AVAILABLE FOR TOPS

LAC GS

LACCATI LUCIDI | GLOSSY LACQUERED COLOURS



301 Bianco



303 Nero



308 Fondente



332 Titanio



333 Crema



340 Cappuccino



341 Ombra



342 Pioggia

GLS COLOR

VETRI LACCATI | LACQUERED GLASS



596 Nero



613 Titanio



617 Fondente



619 Cappuccino



620 Ombra

GLS 591 - GLS 610

VETRI LACCATI BIANCO, CREMA & PIOGGIA | LACQUERED GLASS WHITE, CREMA & PIOGGIA



591 Bianco



610 Crema



621 Pioggia

GLS NP COLOR

VETRI LACCATI NO PRINT | NO PRINT LACQUERED GLASS



696 Nero



713 Titanio



717 Fondente



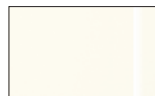
719 Cappuccino



720 Ombra

GLS NP 691 - GLS NP 710

VETRI LACCATI NO PRINT BIANCO, CREMA & PIOGGIA | NO PRINT LACQUERED GLASS WHITE, CREMA & PIOGGIA



691 Bianco



710 Crema



721 Pioggia

VETRI | GLASS



GLS TRASP

561 Trasparente

CALZA PER GAMBA ELETTRIFICABILE | ELECTRIFICABLE LEG FABRIC

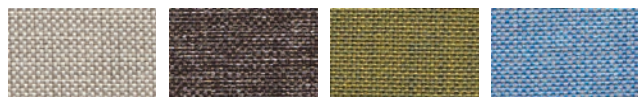


047 Grigio

Campioni colore indicativi, possono differire dall'originale
Colours for reference only and may vary from originals

Tessuti | Fabrics

CAT. C - TESSUTO ANGEL | FABRIC ANGEL



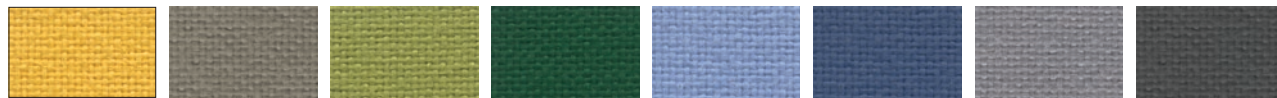
860 Beige
53/401 ABITEX

861 Marrone
43/302 ABITEX

862 Verde
09/800 ABITEX

863 Azzurro
55/701 ABITEX

CAT. D - TESSUTO JET | FABRIC JET



601 Giallo
3090 FIDIVI

602 Cappuccino
2024 FIDIVI

603 Verde Pistacchio
7041 FIDIVI

604 Verde Bosco
7014 FIDIVI

605 Azzurro
6056 FIDIVI

606 Blu
6013 FIDIVI

607 Grigio Poggia
8078 FIDIVI

608 Antracite
8017 FIDIVI

CAT. D+ - JET BIOACTIVE | JET BIOACTIVE



661 Giallo
3090 FIDIVI

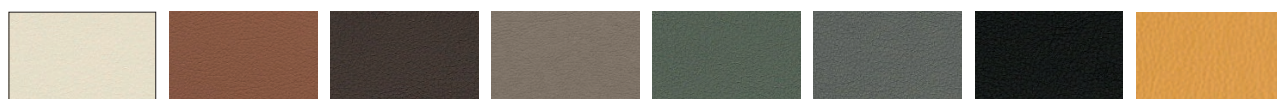
663 Verde Pistacchio
7041 FIDIVI

665 Blu
6013 FIDIVI

662 Grigio Poggia
8078 FIDIVI

664 Antracite
8017 FIDIVI

CAT. E - ECOPELLE | FAUX-LEATHER



933 Beige
1002 FLUKSO

934 Naturale
1026 FLUKSO

935 Marrone Scuro
1006 FLUKSO

936 Marrone Terra
1029 FLUKSO

937 Salvia
1012 FLUKSO

938 Grigio Scuro
1024 FLUKSO

939 Nero
1017 FLUKSO

940 Ocra
1033 FLUKSO

CAT. G - PELLE | LEATHER



511 Nero
5300 DANI

516 Marrone Scuro
5270 DANI

521 Bianco
5000 DANI

527 Naturale
5080 DANI

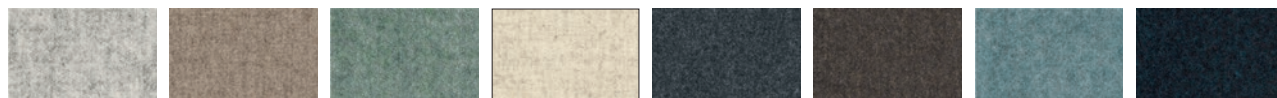
528 Cappuccino
5522 DANI

529 Tortora
5426 DANI

530 Grigio Scuro
5290 DANI

531 Grigio Chiaro
5402 DANI

CAT. H - TESSUTO LUNA 2 | FABRIC LUNA 2



981 Grigio Chiaro
4013 GABRIEL

982 Marrone Chiaro
4101 GABRIEL

983 Verde
4812 GABRIEL

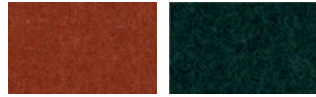
984 Panna
4006 GABRIEL

985 Grigio Scuro
4012 GABRIEL

986 Moka
4102 GABRIEL

987 Avio
4704 GABRIEL

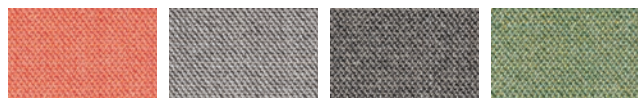
988 Blu Scuro
4601 GABRIEL



989 Zucca
4301 GABRIEL

990 Verde Scuro
4811 GABRIEL

CAT. I - TESSUTO CAPTURE | FABRIC CAPTURE



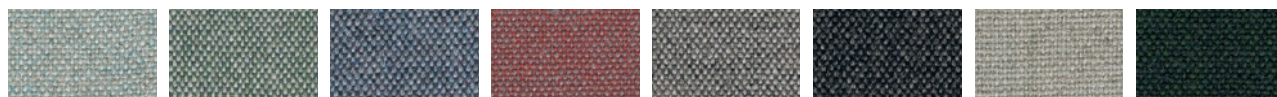
950 Corallo
4802 GABRIEL

951 Grigio Chiaro
4101 GABRIEL

954 Grigio Scuro
4401 GABRIEL

957 Verde
5101 GABRIEL

CAT. L - TESSUTO MAIN LINE FLAX | FABRIC MAIN LINE FLAX



721 Newbury
MLF10 CAMIRA

722 Monument
MLF09 CAMIRA

723 Westminster
MLF22 CAMIRA

724 Barbican
MLF03 CAMIRA

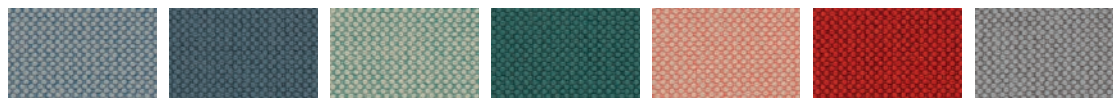
725 Archway
MLF02 CAMIRA

727 Temple
MLF16 CAMIRA

728 Upminster
MLF20 CAMIRA

729 Greenford
MLF32 CAMIRA

CAT. M - TESSUTO MERIT | FABRIC MERIT



701 Blu Chiaro
009 KVADRAT

702 Blu
012 KVADRAT

703 Verde Chiaro
021 KVADRAT

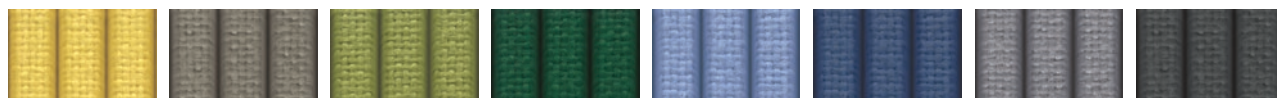
704 Verde
017 KVADRAT

705 Rosso Chiaro
034 KVADRAT

706 Rosso
038 KVADRAT

707 Grigio
043 KVADRAT

CAT. D3D - TESSUTO JET TERMOFORMATO | FABRIC JET 3D THERMOFORMING



651 Giallo
3090 FIDIVI

652 Cappuccino
2024 FIDIVI

653 Verde Pistacchio
2024 FIDIVI

654 Verde Bosco
7014 FIDIVI

655 Azzurro
6056 FIDIVI

656 Blu
6013 FIDIVI

657 Grigio Poggia
8078 FIDIVI

658 Antracite
8017 FIDIVI

SOLO PER SCHIENALI INATTESA | ONLY FOR INATTESA BACK

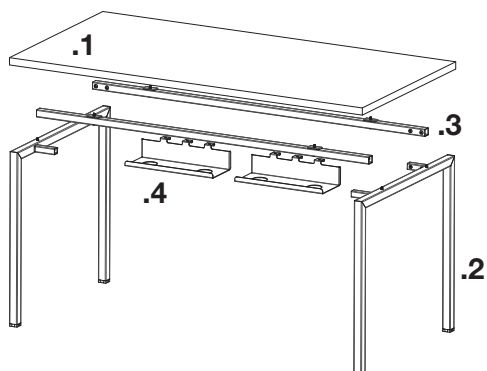
* Tessuti e pelli possono essere soggetti a cambiamenti e a differenze di colore tra lotti diversi. Eventuali differenze non verranno riconosciute come reclamo.
* Fabrics and leathers from different lots may be subject to variations and colour differences. Any differences will not be recognized as a complaint.

AGILE

AGILE

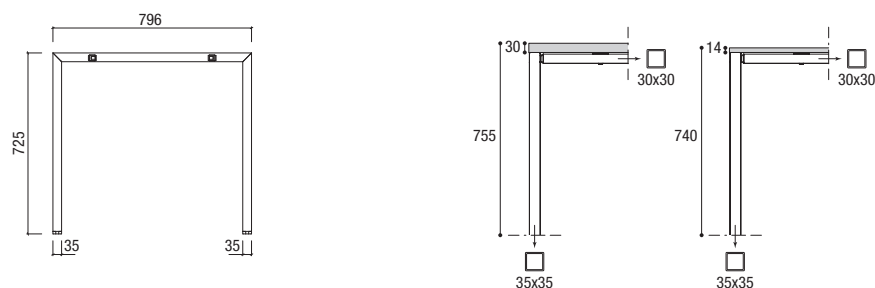
Caratteristiche tecniche Technical specifications

Scrivania Desk

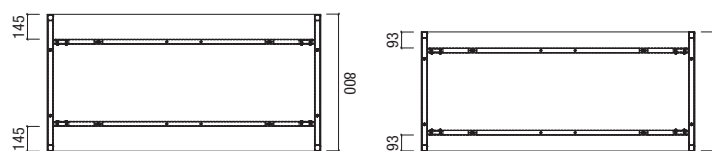


- .1_Piano sp. 14/30 mm - CARB2
_14/30mm thick top - CARB2
- .2_Gamba a ponte
_Bridge leg
- .3_Travi
_Beams
- .4_Vaschetta portacavi OPZIONALE
_OPTIONAL cable tray

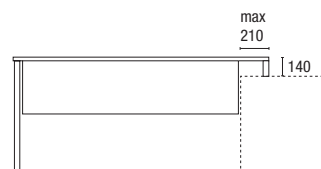
Dettagli tecnici gamba Leg technical details



Posizione gamba Leg position

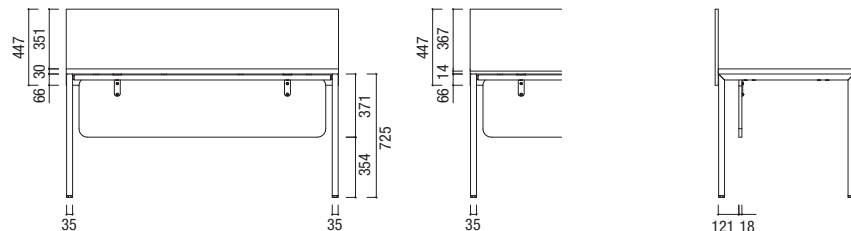


Posizione scrivania per contenitore Desk position for container

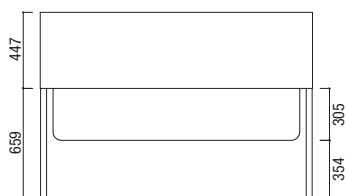


Modesty e Screen Modesty and Screen

Vista lato operatore Operator side view

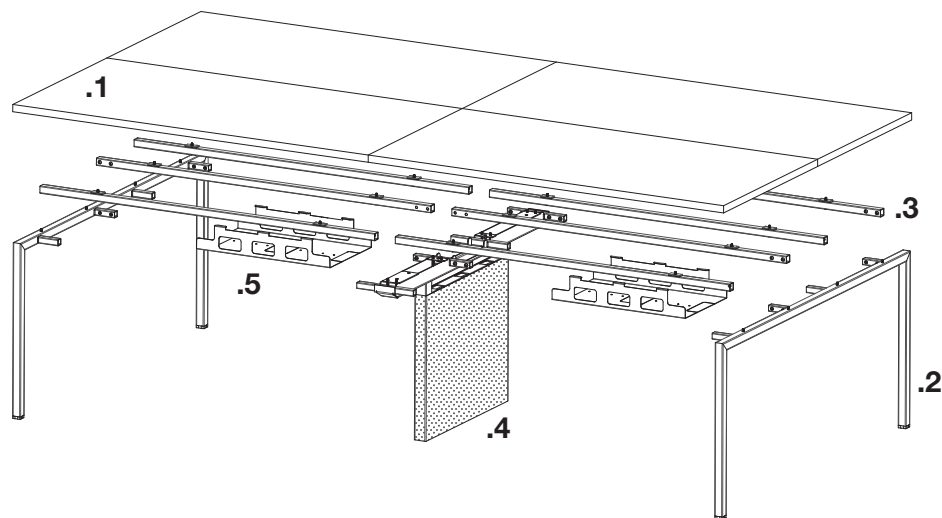


Vista lato visitatore Visitor side view



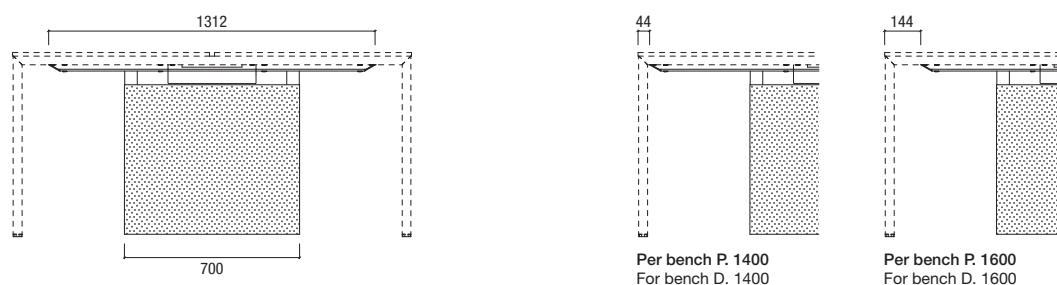
Caratteristiche tecniche Technical specifications

Bench Bench

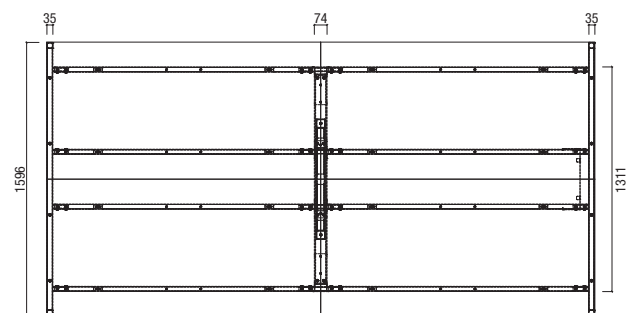


- .1 _Piano sp. 14/30 mm - CARB2
_14/30mm thick top - CARB2
- .2 _Gamba a ponte
_Bridge leg
- .3 _Travi
_Beams
- .4 _Gamba elettrificabile strutturale
_Structural electricable leg
- .5 _Vaschetta portacavi OPZIONALE
_OPTIONAL cable tray

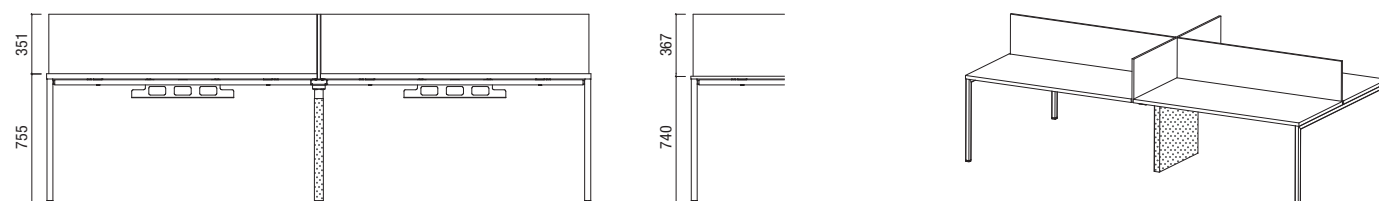
Dettagli tecnici gamba elettrificata. Gamba con calza di copertura, realizzata in tessuto grigio in classe 1 di reazione al fuoco
Technical details of the electricable leg. Leg with covered with an elastic fireproof fabric, class 1 fire tested



Posizione gambe Legs position



Screen Screen



AGILE

< BACK TO
ALL COLLECTIONS

Screen tessuto fonoassorbenti
Fabric absorbing screen

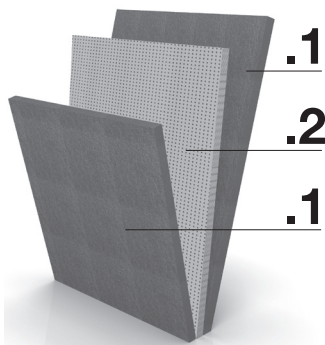


95%

meno rumore
less noise

20%

più produttività
more productivity



.1 _Tessuto cat. C, D, H, I, L; il tessuto aumenta le prestazioni del pannello fonoassorbente interno.
.2 _Pannello realizzato in MDF spessore 18 mm e dotato di specifica perforazione differenziata studiata per creare un'acustica ambientale equilibrata. Il rivestimento in tessuto personalizza il prodotto e ne incrementa il potere fonoassorbente.

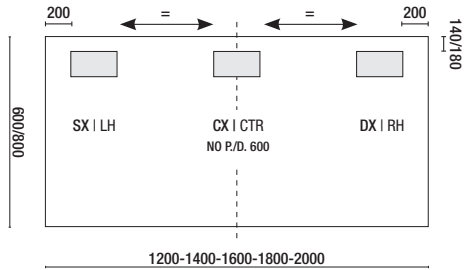
.1 _Fabric cat. C, D, H, I, L. Fabric improves soundproof performance of the internal panel.
.2 _Acoustic Panel composed by melamine board 18 mm th. with linear perforation, upholstered with a soundproof membrane and laminate sheet. The fabric upholstery personalizes the product and improves its sound-proof performance.

Elettrificazione: posizionamento passacavi Wire management: cable port positioning

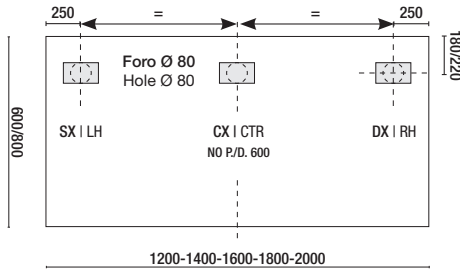
Scrivania e bench in linea

Desk & In line bench

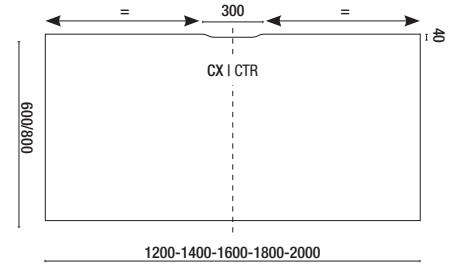
Passacavo tipo "C" e tipo "R"
Cable port type "C" and type "R"



Passacavo tipo "E", "P" e tipo "G"
Cable port type "E", "P" and type "G"



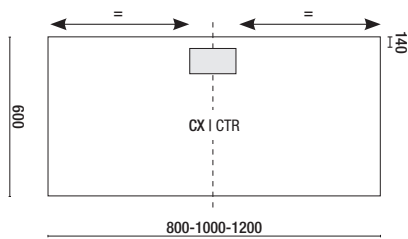
Scaloppa
Scallop



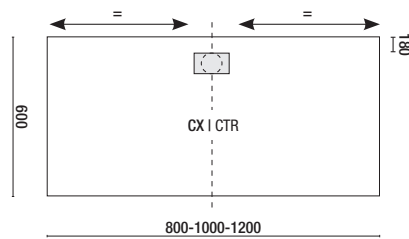
Dattilo

Return

Passacavo tipo "C" e tipo "R"
Cable port type "C" and type "R"



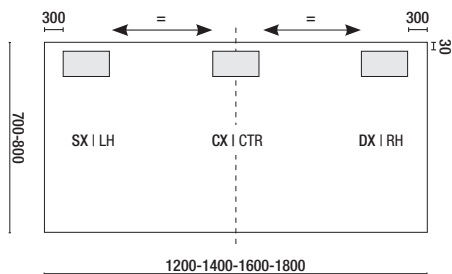
Passacavo tipo "E", "P" e tipo "G"
Cable port type "E", "P" and type "G"



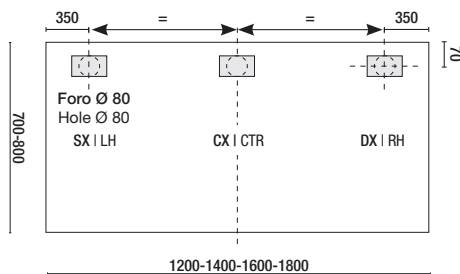
Bench

Bench

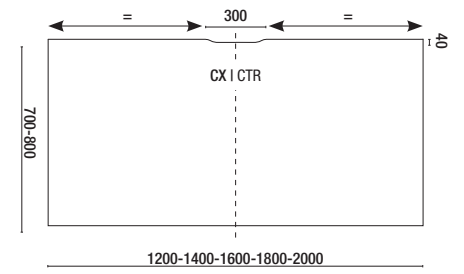
Passacavo tipo "C" e tipo "R"
Cable port type "C" and type "R"



Passacavo tipo "E", "P" e tipo "G"
Cable port type "E", "P" and type "G"

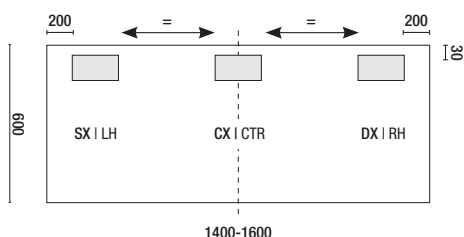


Scaloppa
Scallop

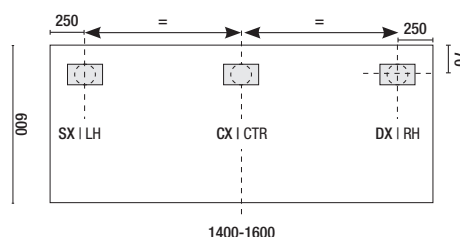


Piano terminale per bench 3-5 posti
Ending top for bench 3-5 pax

Passacavo tipo "C" e tipo "R"
Cable port type "C" and type "R"



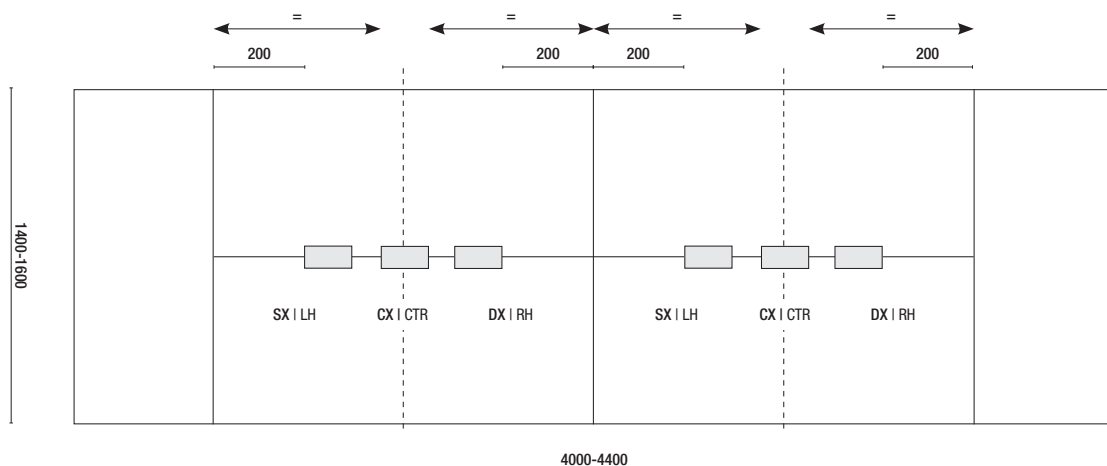
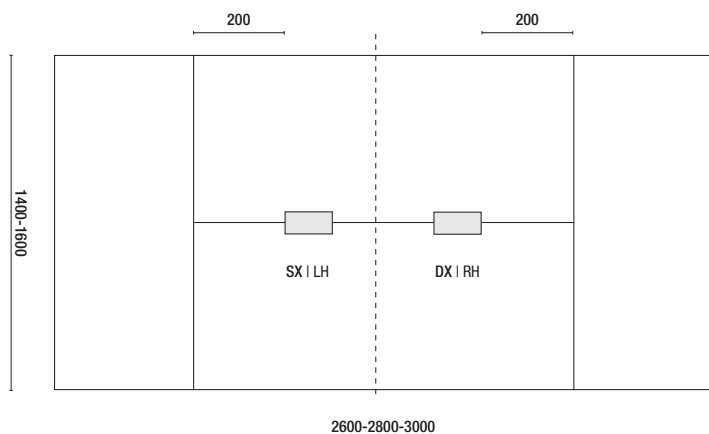
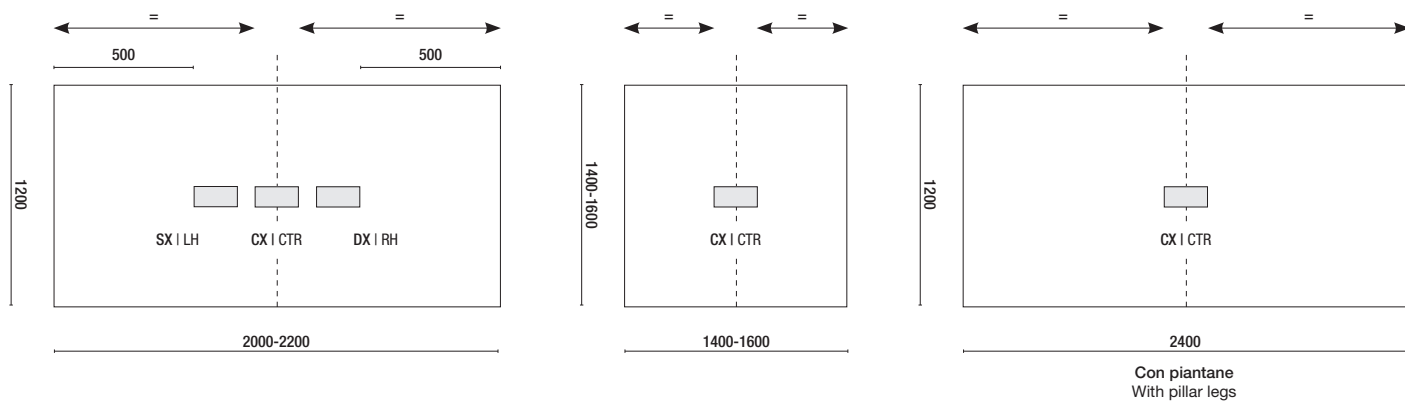
Passacavo tipo "E", "P" e tipo "G"
Cable port type "E", "P" and type "G"



Elettrificazione: posizionamento passacavi Wire management: cable port positioning

Tavoli riunione Meeting tables

Ciabatta Turn e tipo "T"
Turn socket and type "T"



Elettrificazione: posizionamento passacavi Wire management: cable port positioning

Tavoli riunione Meeting tables

Flip top
Flip top

